



The Elaine Way

'The Elaine Way' represents our unwavering commitment to addressing attendance challenges and nurturing a supportive and inclusive school environment. By prioritising empathy, proactive support, and community engagement, we aim to empower our pupils and families to thrive academically and emotionally. This document outlines our comprehensive strategy to address attendance challenges and promote a culture of engagement and belonging. Each aspect is designed to meet the diverse needs of our pupils and families.

Positive Language

In our commitment to fostering a supportive and inclusive school environment, we prioritise positive language as a cornerstone of all our interactions.

To pupils:

- "We missed you."
- "Your friends will be pleased to see you back."
- Is everything okay? (late child)

To parents/carers:

- "Nice to see you."
 - "Can we help in anyway?"
 - "Tough morning?"
- Empathise that we have similar struggles.



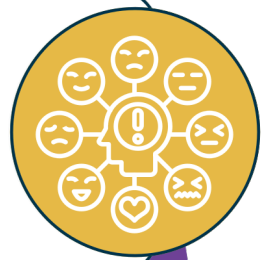
Visible Leadership Team

Our Senior Leadership Team (SLT) exemplifies our commitment to engagement by being present on the school gates each morning and afternoon, greeting both parents and pupils with a smile and a welcoming word. This visible presence underscores our dedication to building connections and fostering a sense of belonging from the moment our community steps onto campus.



Daily Check-ins

Daily emotional check-ins, conducted by the school's Emotional Literacy Support Assistant (ELSA) between 8:50am and 9:20am for identified pupils, underpinned the Zones of Regulation and Six Principles of Nurture. These check-ins provide a safe space for pupils to express themselves and receive the support they need to navigate any challenges they may be facing.



8am Masterclass

At 8 am, masterclass sessions (boosters/interventions), are held for pupils identified through cross-referencing attendance and attainment data. Children attending receive a complimentary breakfast.





Home Visits

We recognise the importance of building strong relationships with families and understanding the individual circumstances that may affect attendance. We conduct home visits, for all new Reception pupils including in-year starters, absent pupils, and those showing early signs of emotional school-based avoidance.

Mental Health Support

We are committed to promoting emotional well-being and resilience among our pupils. We offer access to school-based mental health support teams, providing 1:1 counselling, group work, and parent sessions to help manage both behaviour and anxiety.



Walking Bus

Our walking bus initiative offers a safe and convenient way for pupils to travel to school. By providing a short route around the school, we aim to remove barriers to attendance and promote active participation in school life.

Attendance Competitions

Throughout the academic year, we organise attendance competitions aimed at fostering regular attendance, featuring bespoke challenges. As incentives, we offer a variety of prizes, ranging from free school disco tickets and book vouchers to Easter eggs, advent calendars, and even Amazon Echos. These rewards serve to motivate and incentivise students to prioritise attendance and actively participate in school events.



Class Attendance League Table

Our attendance league table and weekly announcements of gold and silver trophies during school assemblies celebrate and incentivise positive attendance behaviours.

Attendance Certificates

Attendance certificates are awarded termly, recognising the commitment and effort of pupils in maintaining regular attendance. They serve as tangible symbols of appreciation, fostering pride and motivation among recipients while reinforcing the importance of consistent school attendance.





Postcards

We send postcards home to celebrate and encourage progress in attendance, providing a simple yet impactful form of recognition. They aim to motivate pupils to continue their attendance journey while reinforcing the partnership between home and school. Additionally, we use them to express gratitude to parents/carers, acknowledging the crucial role they play in supporting their child's education.

In-App Messages

We send in-app messages to notify parents of 'good things noticed', such as improved punctuality or attendance to masterclasses. These messages serve as timely and direct acknowledgments of the parents' effort and the positive impact on their child's education.



Parent Certificates

For parents who have demonstrated a strong partnership with the school and a commitment to supporting their child's education, we offer parent certificates as a token of appreciation. These certificates are selectively awarded to parents with whom we have established positive and collaborative relationships, where it is deemed these would be appropriate to recognise their contributions.



While the strategies detailed above represent the foundations of our attendance initiatives at Elaine Primary, they do not encompass the entirety of our efforts. We are constantly seeking innovative approaches to bolster attendance and foster greater engagement within our school community. Through receptivity to feedback, adaptation to the changing needs of our pupils and families, and the cultivation of a culture rooted in collaboration and innovation, we are steadfast in our mission to deliver comprehensive support. Our ongoing commitment to promoting attendance underscores our unwavering dedication to empowering every student to achieve academic, emotional, and social success.